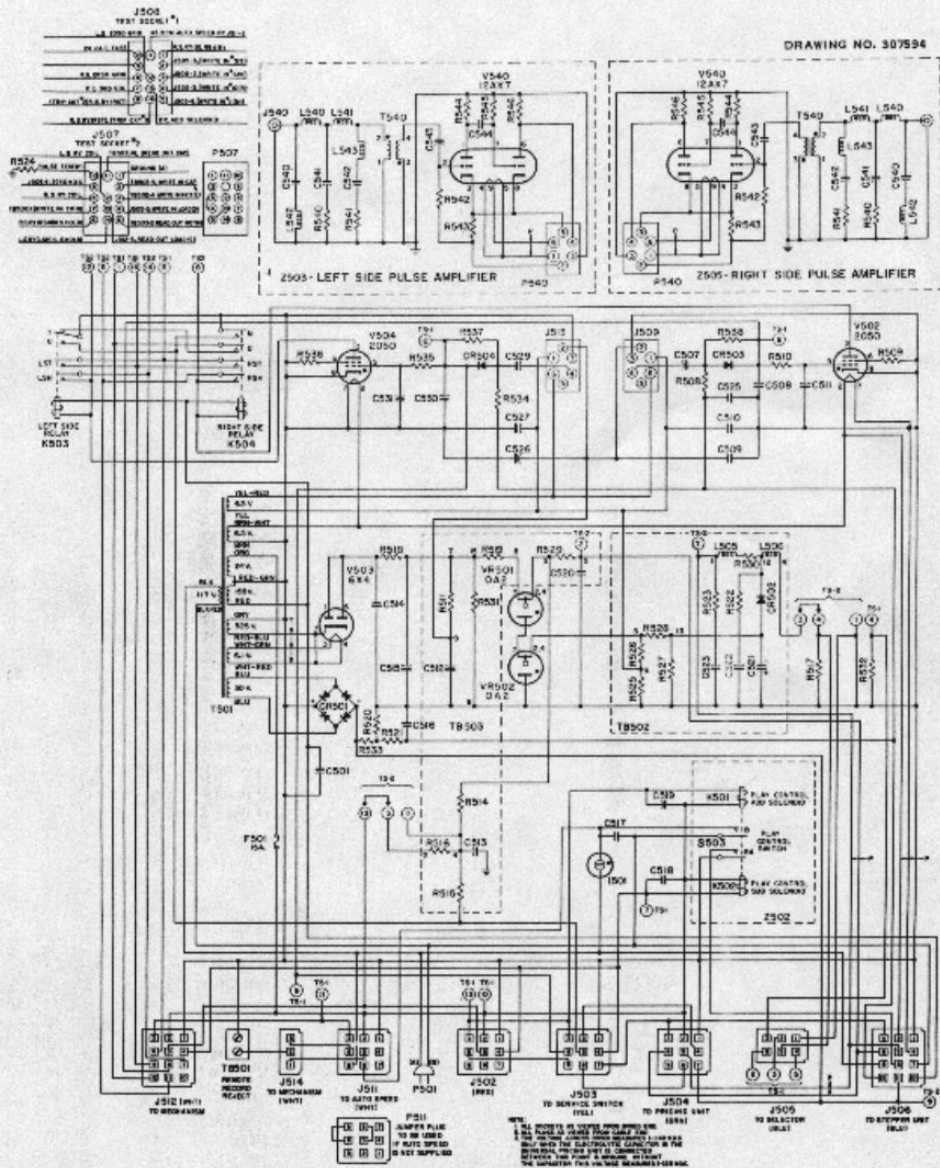


TORMAT CONTROL CENTER, Type TCC1 and TCC2

DRAWING NO. 307594



Schematic Diagram (Code A)

13043

FORMAT CONTROL CENTER, Type TCC1 and TCC2

Item	Part No.	Description	Item	Part No.	Description
C501	86154	0.02 Mfd. 600 V. Paper	P501	307589	Line Cord & Plug Assembly
C507	86248	0.15 Mfd. $\pm 10\%$ 200 V. Paper	P507	307557	12 Prong Plug Assembly
C508	86154	0.02 Mfd. 600 V. Paper	P511	307598	Auto-Speed Replacement Jumper Plug Assem.
C509	86251	3000 Mmf 500 V. Ceramic	R506	82464	2.2 Megohm $\pm 10\%$ $\frac{1}{2}$ W.
C510	86313	0.01 Mfd. 500 V. Ceramic	R509	82440	22,000 Ohms $\pm 10\%$ $\frac{1}{2}$ W.
C511	86255	2000 Mmf 500 V. Ceramic	R510	82456	470,000 Ohms $\pm 10\%$ $\frac{1}{2}$ W.
C512	87637	10 Mfd. 450 V. Lytic	R511	308975	21,000 Ohm, $\pm 5\%$, 2 W.
C513	86296	0.15 Mfd. $\pm 10\%$ 600 V. Paper	R514	82837	56,000 Ohms $\pm 10\%$ 2 W.
C514	87635	15 Mfd. 450 V. Lytic	R515	82432	4,700 Ohms $\pm 10\%$ $\frac{1}{2}$ W.
C515	87635	15 Mfd. 450 V. Lytic	R516	308971	36 Ohms $\pm 5\%$ $\frac{1}{2}$ W.
C516	87571	25 Mfd. 50 V. Lytic	R517	82442	33,000 Ohms $\pm 10\%$ $\frac{1}{2}$ W.
C517	86317	0.01 Mfd. 1400 V. Ceramic	R518	81194	3,500 Ohms Fuse Resistor $\pm 10\%$ 5 W.
C518	86313	0.01 Mfd. 500 V. Ceramic	R519	82836	2,700 Ohms $\pm 10\%$ 2 W.
C519	86313	0.01 Mfd. 500 V. Ceramic	R520	82431	3,900 Ohms $\pm 10\%$ $\frac{1}{2}$ W.
C520	86295	0.068 Mfd. 600 V. Paper	R521	82455	470,000 Ohms $\pm 10\%$ $\frac{1}{2}$ W.
C521	87636	10 Mfd. 150 V. Lytic	R522	82617	47 Ohms $\pm 5\%$ $\frac{1}{2}$ W.
C522	86313	0.01 Mfd. 500 V. Ceramic	R523	82617	47 Ohms $\pm 5\%$ $\frac{1}{2}$ W.
C523	86313	0.01 Mfd. 500 V. Ceramic	R524	82437	12,000 Ohms $\pm 10\%$ $\frac{1}{2}$ W.
C525	86251	3000 Mmf. 500 V. Ceramic	R525	82454	330,000 Ohms $\pm 10\%$ $\frac{1}{2}$ W.
C526	86251	3000 Mmf. 500 V. Ceramic	R526	82451	180,000 Ohms $\pm 10\%$ $\frac{1}{2}$ W.
C527	86313	0.01 Mfd. 500 V. Ceramic	R527	82598	150,000 Ohms $\pm 5\%$ $\frac{1}{2}$ W.
C528	86248	0.15 Mfd. $\pm 10\%$ 200 V. Paper	R528	82611	3,000 Ohms $\pm 5\%$ $\frac{1}{2}$ W.
C530	86154	0.02 Mfd. 600 V. Paper	R529	82998	270,000 Ohms $\pm 10\%$ 1 W.
C531	86255	2000 Mmf. 500 V. Ceramic	R530	82617	47 Ohms $\pm 5\%$ $\frac{1}{2}$ W.
CR501	400587	Selenium Rectifier	R531	82460	1 Megohm $\pm 10\%$ $\frac{1}{2}$ W.
CR502	309384	Silicon Rectifier	R532	82442	33,000 Ohms $\pm 10\%$ $\frac{1}{2}$ W.
CR503	309384	Silicon Rectifier	R533	82424	1,000 Ohms $\pm 10\%$ $\frac{1}{2}$ W.
CR504	309384	Silicon Rectifier	R534	82464	2.2 Megohm $\pm 10\%$ $\frac{1}{2}$ W.
F501	307556	Fuse 15 Amp.	R535	82456	470,000 Ohms $\pm 10\%$ $\frac{1}{2}$ W.
J501	307572	Neon Lamp	R536	82440	22,000 Ohms $\pm 10\%$ $\frac{1}{2}$ W.
J502	307552	Chassis Connector Housing (Red, 9)	R537	82462	1.5 Megohm $\pm 10\%$ $\frac{1}{2}$ W.
	941757	Contact	R538	82462	1.5 Megohm $\pm 10\%$ $\frac{1}{2}$ W.
J503	307563	Chassis Connector Housing (Yellow, 9)	S503	303481	Play Control Switch
	941757	Contact	T501	307587	Power Transformer
J504	307564	Chassis Connector Housing (Green, 9)	*T501	307588	Power Transformer
	941757	Contact	TB501	307650	Terminal Board (2 Terminals)
J505	307561	Chassis Connector Housing (Blue, 6)	TB502	307567	Terminal Board Assembly
	941757	Contact	TB503	307568	Terminal Board Assembly
J506	307565	Chassis Connector Housing (Blue, 12)	V502	308003	20S0 Thyatron
	941757	Contact	V503	308626	6X4 Vacuum Tube
J507	306014	14-Connector Socket	V504	308003	20S0 Thyatron
J508	306014	14-Connector Socket	VR501	308005	0A2 Voltage Regulator Tube
J511	84315	Chassis Connector Housing (White, 9)	VR502	308005	0A2 Voltage Regulator Tube
	941757	Contact	Z501	303435	Pulse Amplifier Unit
J512	307153	Chassis Connector Housing (White, 12)	Z502	303464	Play Control Assembly
	941757	Contact	Z503	303435	Pulse Amplifier Unit
J514	803722	Chassis Connector Housing (White, 3)	XVR501	84295	7 Pin Miniature Socket
	941757	Contact	XVR502	84295	7 Pin Miniature Socket
K501	303482	Play Control Add Solenoid Assembly	XV502	84292	Octal Socket
K502	303484	Play Control Subtract Solenoid Assem.	XV503	84295	7 Pin Miniature Socket
K503	307590	Left Side Relay	XV504	84292	Octal Socket
K504	307592	Right Side Relay			
L505	303603	130 μ h Choke $\pm 5\%$			
L506	303702	130 μ h Choke $\pm 5\%$			

* Components used for 30 cycle operation only.