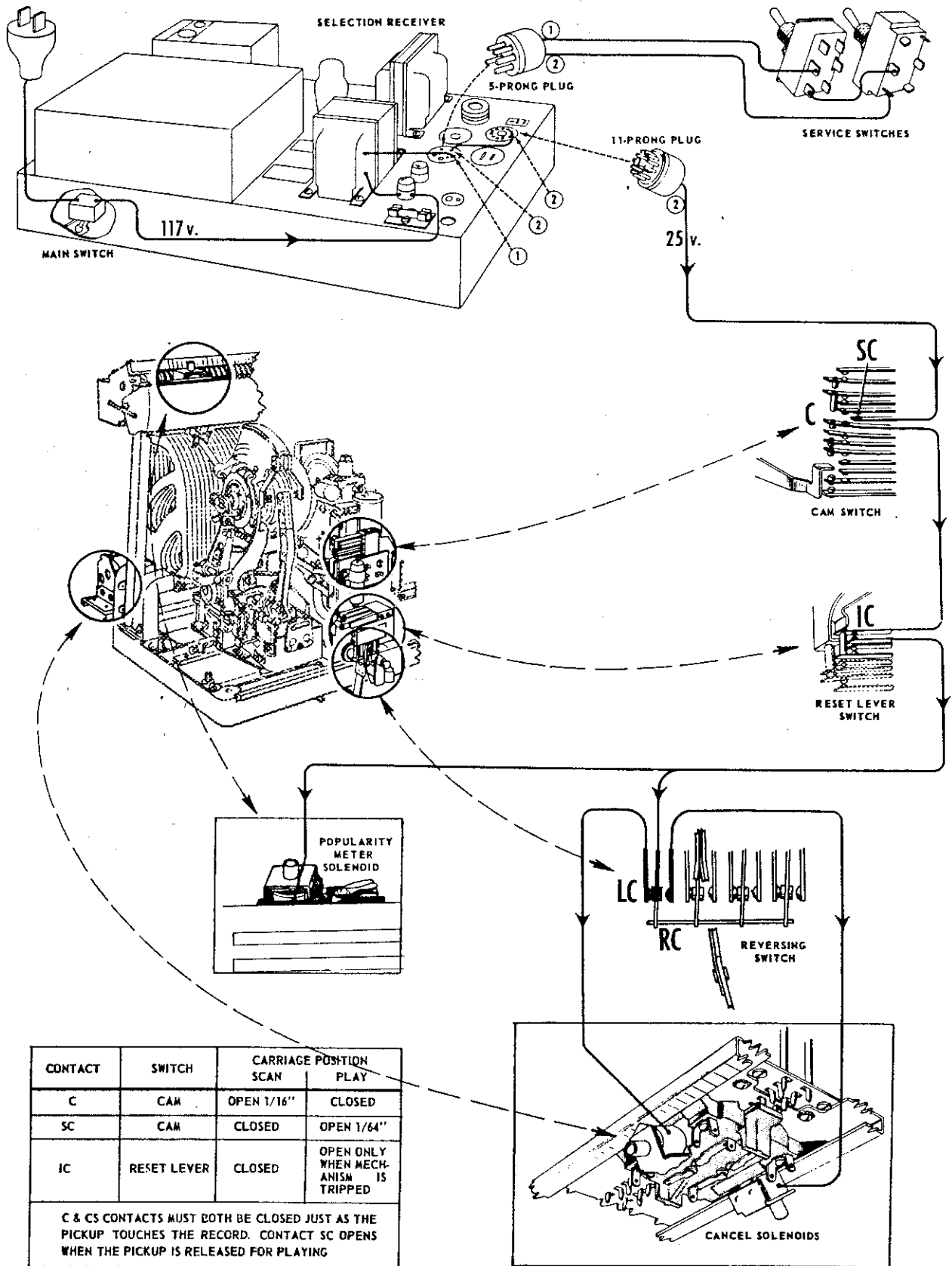


Picture Diagram - SELECTION CANCEL - Select-o-matic "100" - M100C

(NOT A SCHEMATIC OR WIRING DIAGRAM)



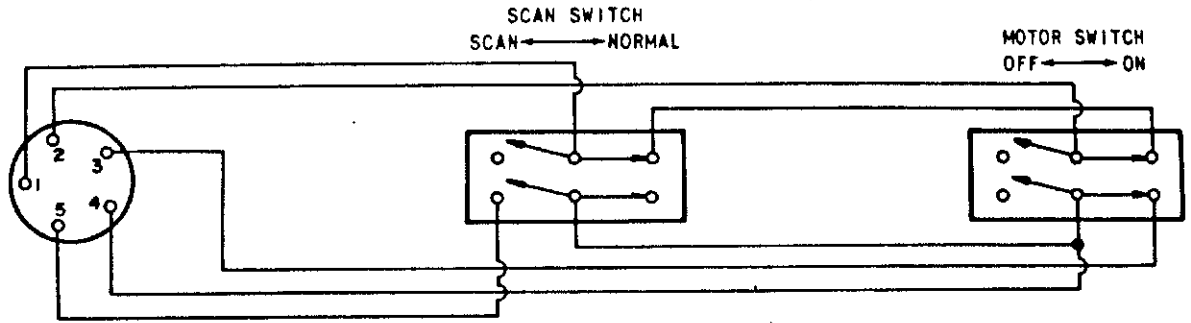


Figure 17. Schematic Diagram - Service Switches.

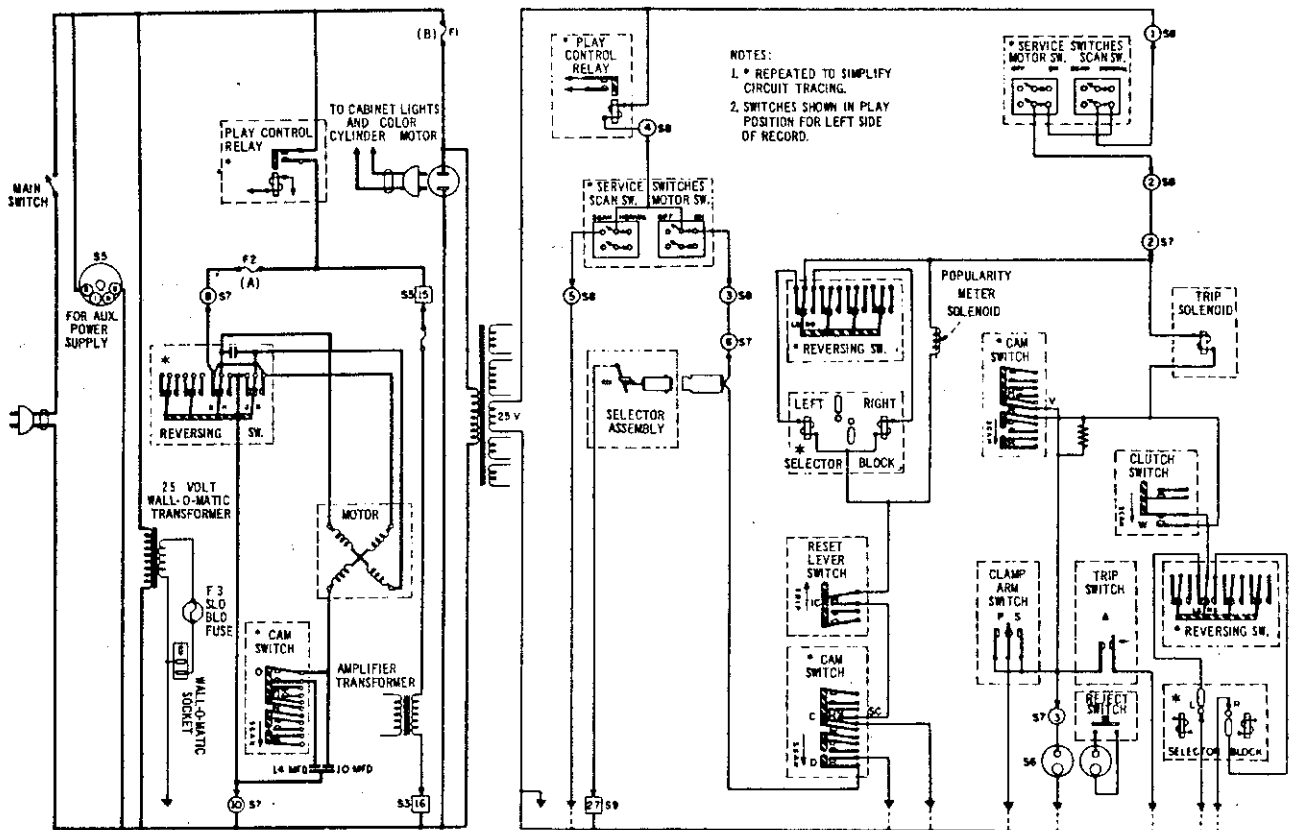
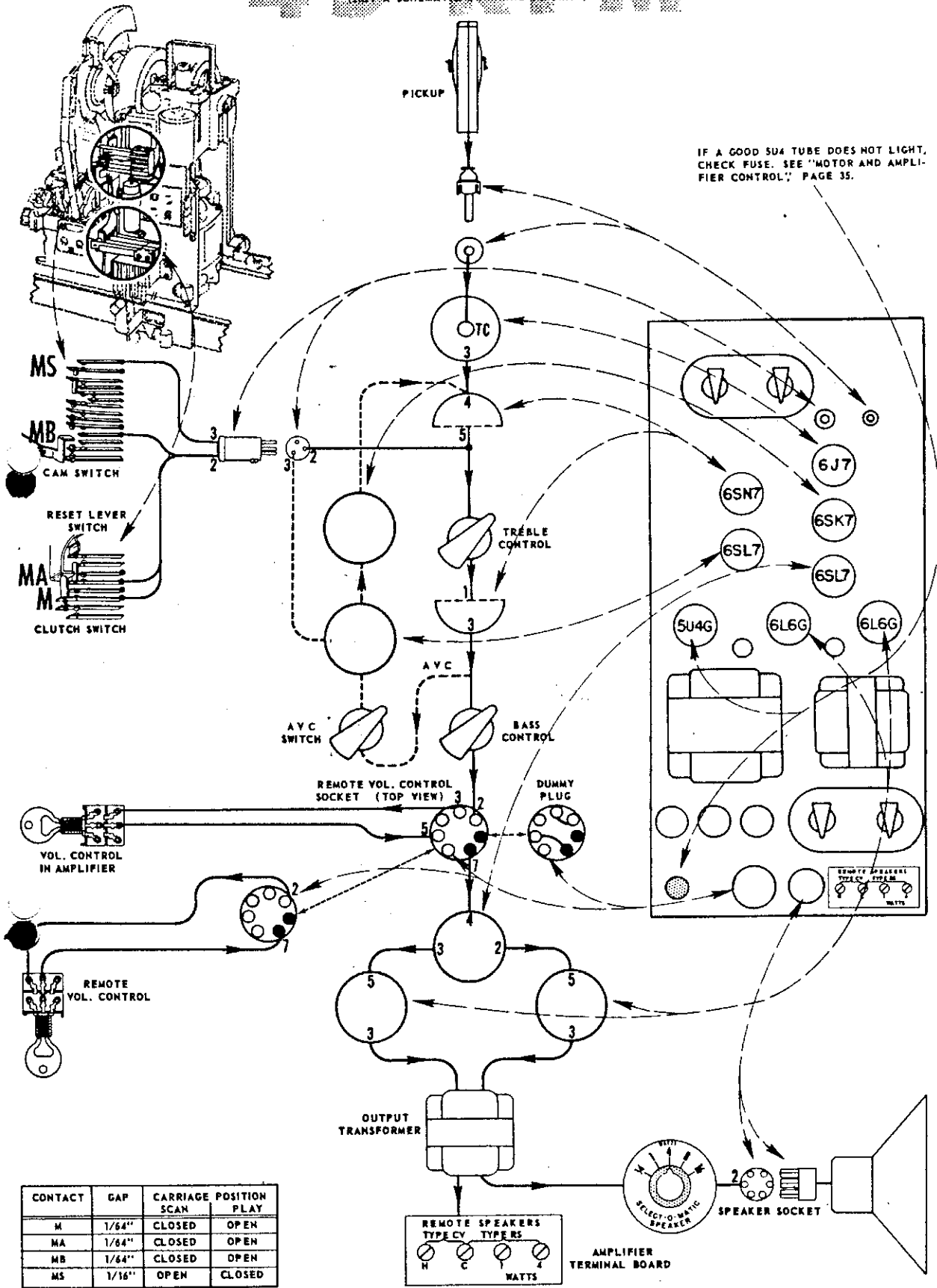


Figure 18. Schematic Diagram - Power & Control Wiring,
145S7 - L6 Mechanism & WSR 5-L6 Selection Receiver.

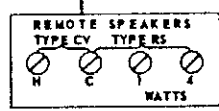
Picture Diagram - AMPLIFIER & SOUND - Select-o-matic "100" - M100C

(JUST A SCHEMATIC OR WIRING DIAGRAM)



IF A GOOD 5U4 TUBE DOES NOT LIGHT, CHECK FUSE. SEE "MOTOR AND AMPLIFIER CONTROL," PAGE 35.

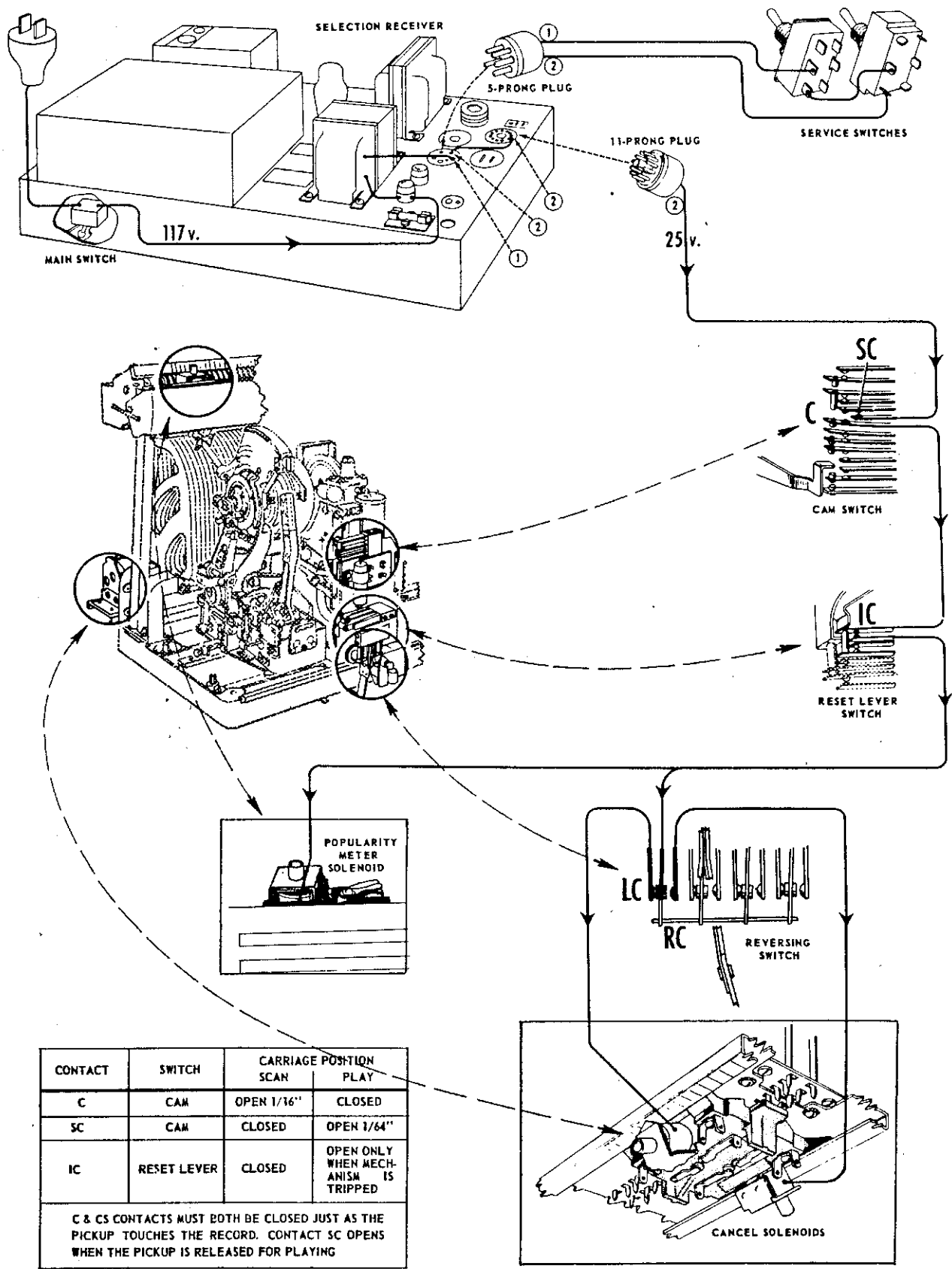
CONTACT	GAP	CARRIAGE POSITION	SCAN	PLAY
M	1/64"	CLOSED	OPEN	
MA	1/64"	CLOSED	OPEN	
MB	1/64"	CLOSED	OPEN	
MS	1/16"	OPEN	CLOSED	



AMPLIFIER TERMINAL BOARD

Picture Diagram - SELECTION CANCEL - Select-o-matic "100"- M100C

(NOT A SCHEMATIC OR WIRING DIAGRAM)



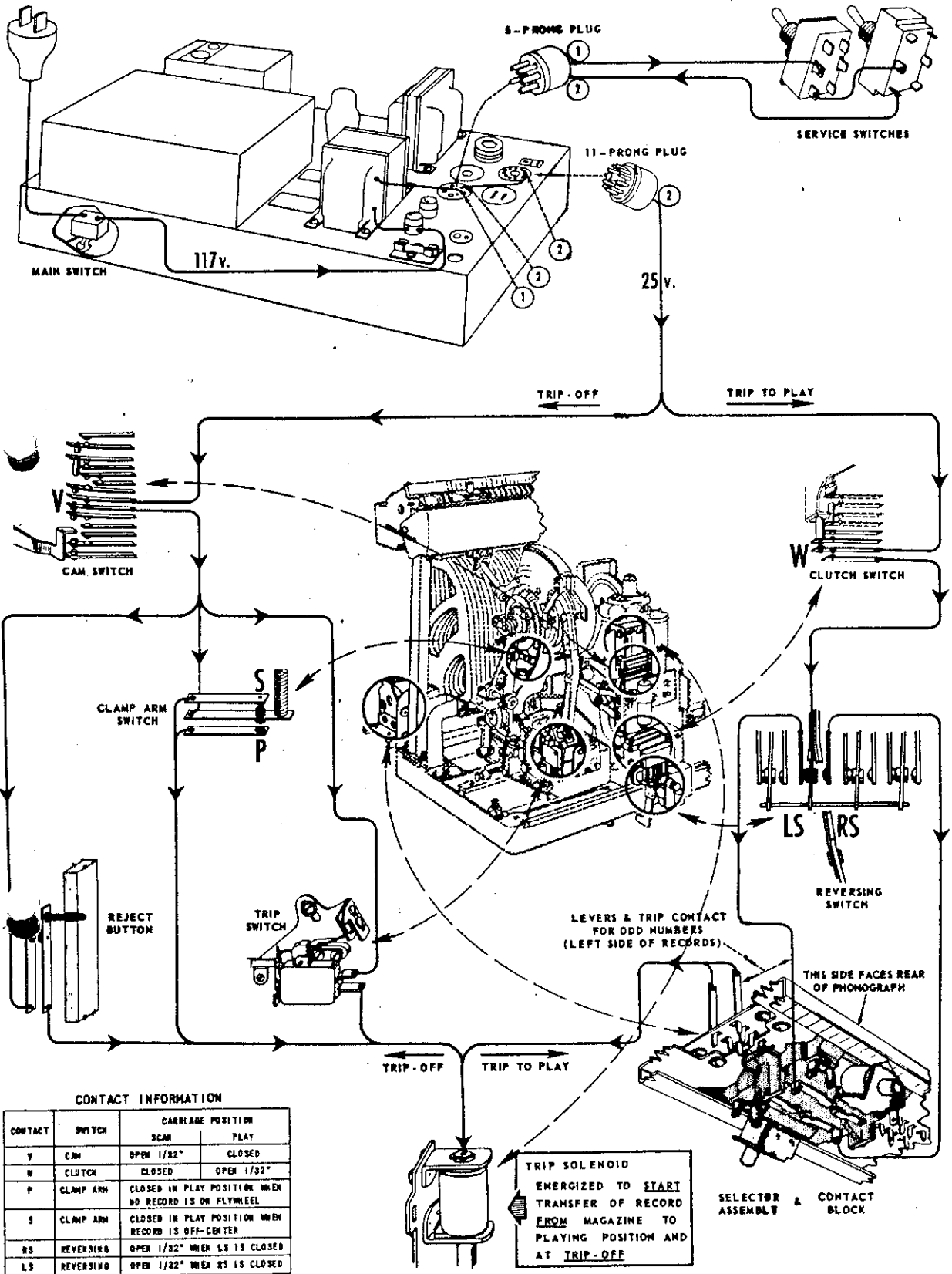
CONTACT	SWITCH	CARRIAGE POSITION	
		SCAN	PLAY
C	CAM	OPEN 1/16"	CLOSED
SC	CAM	CLOSED	OPEN 1/64"
IC	RESET LEVER	CLOSED	OPEN ONLY WHEN MECHANISM IS TRIPPED

C & CS CONTACTS MUST BOTH BE CLOSED JUST AS THE PICKUP TOUCHES THE RECORD. CONTACT SC OPENS WHEN THE PICKUP IS RELEASED FOR PLAYING

(HL)

Picture Diagram - TRIP SOLENOID - Select-a-matic "100" - M100C

(NOT A SCHEMATIC OR WIRING DIAGRAM)

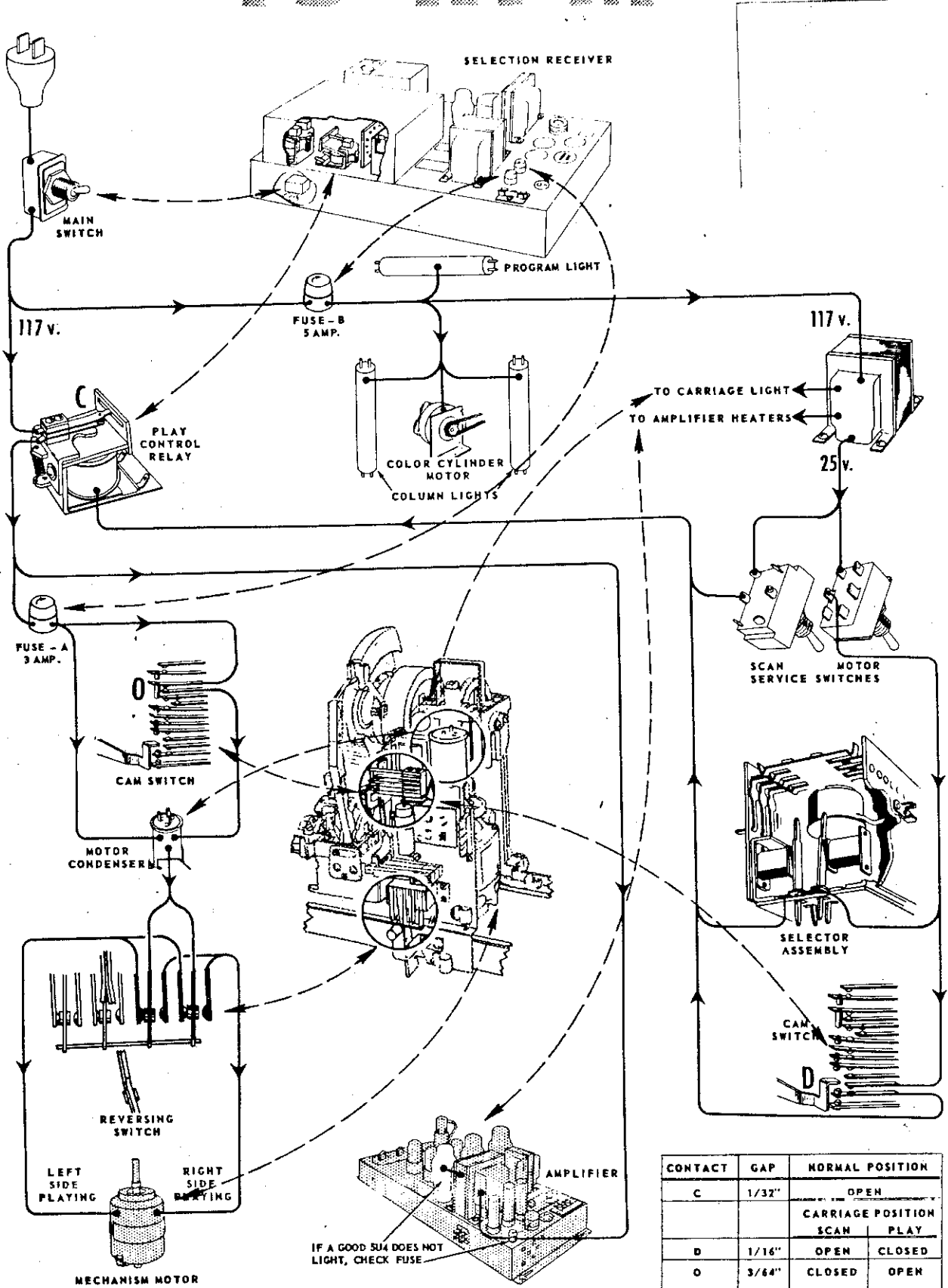


CONTACT INFORMATION

CONTACT	SWITCH	CARRIAGE POSITION	
		SCAN	PLAY
Y	CAM	OPEN 1/32"	CLOSED
W	CLUTCH	CLOSED	OPEN 1/32"
P	CLAMP ARM	CLOSED IN PLAY POSITION WHEN NO RECORD IS ON FLYWHEEL	
S	CLAMP ARM	CLOSED IN PLAY POSITION WHEN RECORD IS OFF-CENTER	
RS	REVERSING	OPEN 1/32" WHEN LS IS CLOSED	
LS	REVERSING	OPEN 1/32" WHEN RS IS CLOSED	

Picture Diagram - MOTOR & AMPLIFIER CONTROL - Select-o-matic "100" - M100C

(NOT A SCHEMATIC OR WIRING DIAGRAM)



CONTACT	GAP	NORMAL POSITION	
C	1/32"	OPEN	
		CARRIAGE POSITION	PLAY
D	1/16"	OPEN	CLOSED
O	3/64"	CLOSED	OPEN

Picture Diagram - ELECTRICAL SELECTOR OPERATION - Select-o-matic "100" - M100C

(NOT A SCHEMATIC OR WIRING DIAGRAM)

